

Mace's Sky Project Team Cultivates London BSKyB Building Two Project

Isleworth, West London

Mace Group Ltd

BIG Challenge 2015 submission category: Community engagement

Project overview

Cultivate London is an innovative urban farm and social enterprise which specialises in making use of multiple derelict sites in West London to train unemployed young people in horticulture, and produce a range of edible and ornamental plants.

Mace at the Sky Campus project built a good relationship with Cultivate London following on from a successful 2014 World Environment Day.

Cultivate London acquired a derelict plot of land in an urban area from Ealing Council and together Mace and Cultivate London set about converting it into a productive area for the community.

The project was undertaken between January and March 2015. We provided 8 Mace and Mace supply chain personnel for the project with the scheme totalling £5,000 to get the 1300 m2 site operational.

This location is temporary and in place until 2017

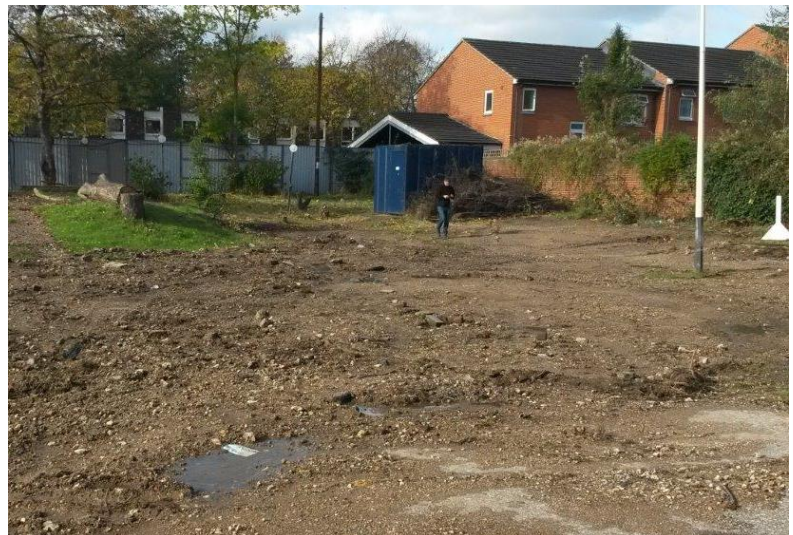


Photo: Site prior to works

when the lease with Ealing council expires at which time they will move to another location.

What were the biodiversity conditions on site, prior to the enhancement?

Derelict site with a 4 trees on the boundary with approx. 10-15m2 worth of grass. There is a small concreted area covering approx. 50m2 and a small tarmacked area by the entrance covering 50m2. The remainder was muddy soil. There were little to no biodiversity features prior.

Were there any specific conditions that led to you carrying out this work?

As part of Mace's Community Engagement scheme at the Sky Campus project we committed ourselves to completing a number of community investment projects which would result in the company leaving a positive legacy behind after the project has been completed benefiting those in the local area.

What were the biodiversity measures taken?

Working with Cultivate London we identified the opportunities and areas that we could help with in developing their 1300m2 site.

By helping to get this site operational we have enabled Cultivate London to be able to train apprentices and the local community in horticultural skills which in the long term will boost biodiversity across a wider area than just this site.

Primarily the measures taken on this project allows the farm to grow plants for sale in order to cover operational cost of the social enterprise but the real value in the site comes from the benefit to the local community by teaching young people how to grow their own food in the garden or even kitchen and giving young people the opportunity to learn new, valuable skills which could help them gain employment.

We have enabled this location to educate the local community which will contribute to the long term management of local areas.

The measures taken are replicable across other derelict urban sites and therefore are not limited just to this location.

A large amount of timber used on the project has been reclaimed from our site, and although un-useable for the construction team we put it to great use at Cultivate London's site.

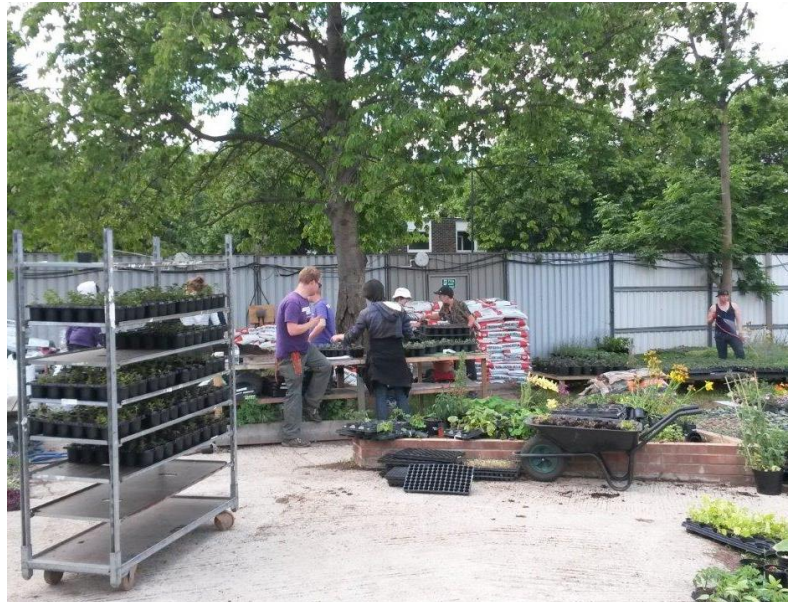


Photo: Finsihed Site in Operation

How would you best describe the project?

An enhancement.

Further information

The project began by undertaking a site assessment of the most urgent issues that Cultivate London were facing in getting their new location operational.

We quickly assessed that the site needed a thorough tidy after years of neglect by the previous tenant. We had a skip delivered to site and provided a labourer to tidy the site.

Two skips were delivered with 98% of waste being recycled. We provided PPE and winter working clothing. The next step was to deliver new (FSC) and reclaimed

timber from our site along with a handyman to build long growth benches to enable plants to be laid flat.

To capitalise on the rapidly approaching spring growing season we provided and installed outdoor electrical sockets and checked electrical safety of existing services on site and 400W growth lamps were also supplied.

Adrienne Attorp said, "Cultivate London has been incredibly fortunate to receive support from Mace and their supply chain in setting up our new growing site in South Acton. The labour time and supplies that Mace has so kindly donated to us have been instrumental in helping us get our feet on the ground.

This support has enabled us to continue to smoothly operate our youth training programme during a difficult transition period (our recent site move), and we are very grateful for it."

We subsequently purchased 400 plants to give to our workforce on the Sky project for World Environment Day while encouraging our staff to consider their impact by growing their own food.

What was your personal motivation for carrying out the enhancement?

Mace has a core value 'Pursuit of a Better Way' and this project is a prime example of how it is possible for construction projects to operate in the community in a better way and build lasting relationships benefiting not only future biodiversity and sustainability but educating the local community.



Photo: Apprentices trained at New Cultivate London Site