

Bond Street Buzz
Hanover Square, London
 JV – Costain Skanska - C412

BIG Challenge 2015 submission category: Pollinator

Project overview

The Bond Street Buzz' initiative focuses on increasing biodiversity in Mayfair, London which is a highly urbanised environment. This includes temporary measures at the Bond Street Crossrail project including planters filled with bee friendly plants; a biodiversity action plan highlighting areas where we can influence positively as a project and awareness raising exercises regarding the importance of pollinators and biodiversity as a whole. Our longer term initiatives are to ensure a legacy when the Crossrail project is complete. This will be achieved through stakeholder liaison, forming links with residents of the Peabody estate to utilise their roof top space across Mayfair and create a sustainable ecosystem for pollinators. We have stakeholders who are keen to assist with maintaining roof space areas to ensure our long term aim is achieved, which is to ensure residents with biodiversity initiatives in the area when the Crossrail project is completed.



Photo: Planting up planter boxes at C412 Bond St. Eastern Ticket Hall

We have also recently increased our green areas onsite and are rolling out new planted areas at the site entrance and welfare facility following the success and visibility of bees in our existing planted locations.

What were the biodiversity conditions on site, prior to the enhancement?

There were no enhancements before the initiative was implemented as the project consists predominantly of the construction of large underground structures such as tunnels and ticket halls to enable to running of the Crossrail.

Additionally it was considered that there was minimal space to create temporary or long lasting biodiversity enhancements to encourage pollinators as we are surrounded by busy roads; residential and commercial premises.

Were there any specific conditions that led to you carrying out this work?

There were no specific conditions however some members of staff seen it as a key area that required more focus.

This was the main driver for doing the work. We also included targets in our site Biodiversity Action Plan to:

- To ensure that habitat and species targets from the UK Biodiversity Action Plan and the local LBAP are translated into effective action within the catchment area
- To identify targets for other habitats and species of local importance within the catchment area.
- To ensure that opportunities for conservation and enhancement of biodiversity are fully considered throughout site operations, and
- To monitor and report on progress in biodiversity conservation.

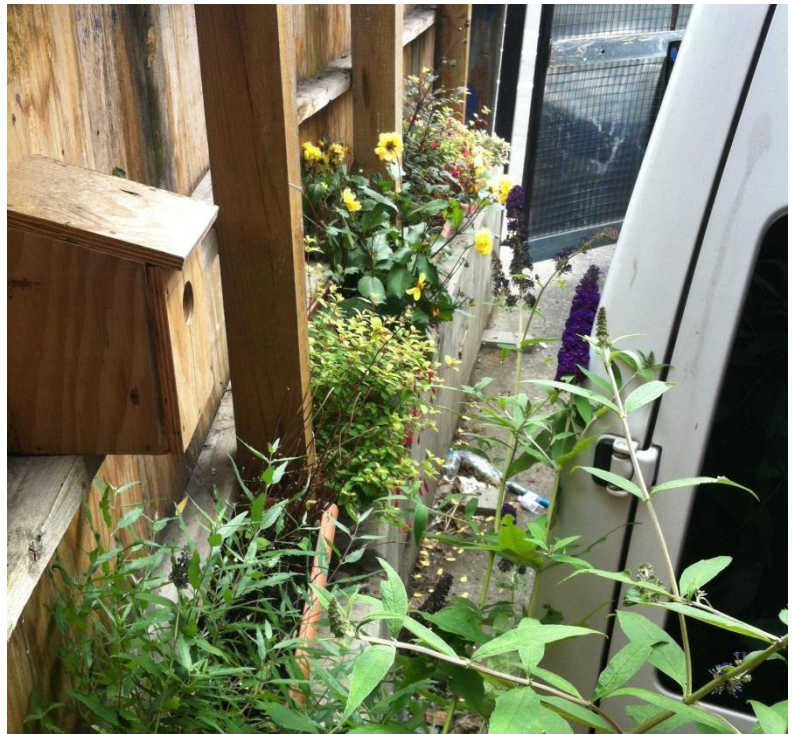


Photo: Sample of plants at Crossrail C412 Eastern Ticket Hall

What were the biodiversity measures taken?

Measures taken as part of this campaign included presentations to staff on the importance of bees and biodiversity; purchasing and planting bee friendly plants, maintenance, setting up links with the local community; and stakeholders to take forward the establishment and maintenance of roof top spaces in the area..

The long term biodiversity of the area has been considered hence enabling residents to take forward and maintain the initiatives once the Crossrail project is complete.

New areas of habitat have been formed and further ones are in the planning

stage over the coming months.

Any site temporary habitats will be left in the local area in the parks upon completion of the project. It has been imminently visible already that there has been a biodiversity net gain.

With further green spaces and bee friendly plants this is likely to grow further. Workers, staff, the local community and stakeholders have all been engaged as part of these measures.

The aim is to use recycled material from site to assist with these creations and aim to utilise site staff skills in the process.

As part of the campaign members of the local community and staff attended Kew Gardens to see the positive impact of a well-managed biodiversity key area. Talks have been delivered to our office and site staff in relation to biodiversity importance and what they can do at home to assist the growth of bee populations.

Waste from site has also been reused and recycled to build flowers boxes and various other key items.

How would you best describe the project?

An enhancement.

personal motivation for the project was to align with the Government’s “National Pollinator Strategy: for bees and other pollinators in England.”

By doing so, support pollinators across the city of London through a mix of awareness raising campaigns and physical means such as planting bee-friendly flowers and form part of the BREEAM sustainable building certification scheme which already recognises plants with a known benefit or attraction to wildlife.

As the project is based in Central London, in a highly urbanised environment we needed to maximise the effectiveness of the few ecological corridors present and increase these where feasible which we have achieved through the ongoing pollinator initiative.

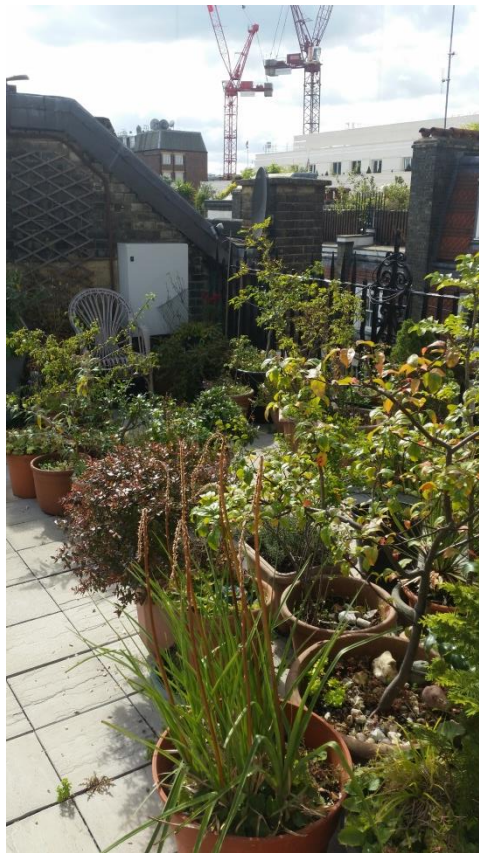


Photo: Residents Roof Top Space

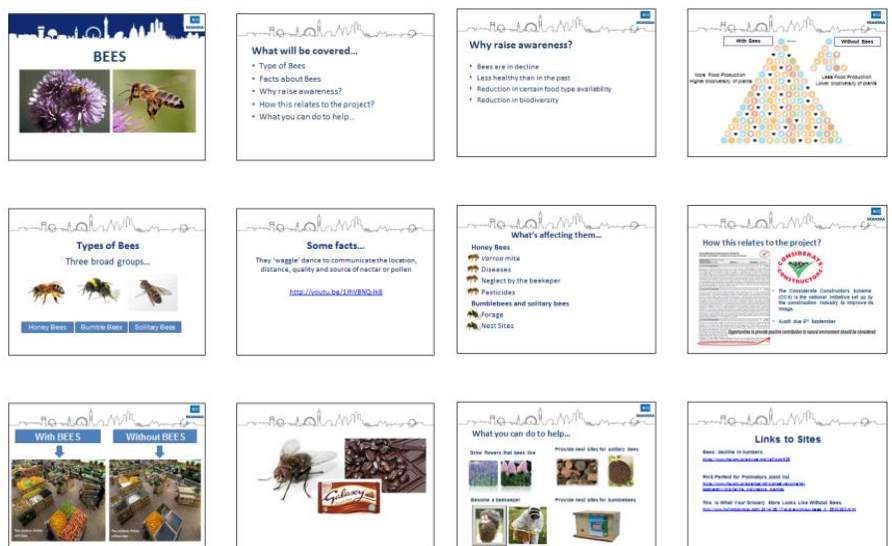


Photo: Presentation delivered on Bees and their importance