

Bringing Biodiversity to Blocks Newark, Newark-on-Trent, Nottinghamshire, England Tarmac Building Products

BIG Biodiversity Challenge Award category: Small Scale Permanent

Project overview

Newark Blocks is one of Tarmac's largest block manufacturing plants covering 21 acres in a rural/industrial setting, surrounded by trees, streams, houses and a local football park.

As part of our biodiversity objectives, the site manager saw the opportunity of a sand bank using material on site (aggregates & sand) and layout of site to create a sand bank for sand martins that were seen in the local area.

What were the biodiversity conditions on site, prior to the enhancement?

The site is made up of a stockpile area of materials for the block making process and the Block Plant itself. The area now designated for the sand bank was a un-utilised part of the stockpile area.

Were there any specific conditions that led to you carrying out this work?

Part of the Tarmac Environmental Management System assigns each operational site to look at developing biodiversity goals on site and this site looked at options for enhancing biodiversity on site from looking at what species were observed on site (biodiversity offsetting).



Sand Bank created in Block Yard

What were the biodiversity measures taken?

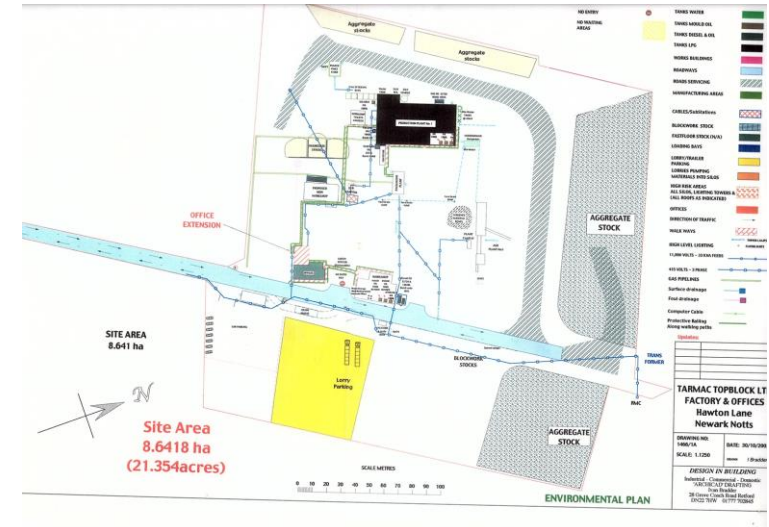
Biodiversity is important to those that work and live local to our operations, the site has put in place measures to ensure this habitat is looked after as a long term project and that Sand Martins have a place to nest all year round.

This is a valuable new habitat that will bring wildlife to our work place and ensures that they are protected and not disturbed, so separating them from our operational areas.

We used materials which were a mixture of aggregates which would have originally been used in our production. This mixture of aggregates (sand and gravel) allowed for a perfect structure for the sand bank.

All staff on site were supportive of the new biodiversity area and site were supportive in creating an assessment and method of work for the area, which only took a few hours to create with the help of the shovel driver.

This has been captured within the Biodiversity section of the Environmental Management System and is being captured as good practice within our internal intranet Environmental Stories.



Site Map

How would you best describe the project?

An enhancement

Further information

The sand bank was setup very quickly, it only took 30 minutes! The site created cliff face from an existing stockpile (light aggregates) and the loading shovel driver created a cliff structure for the sand martins.

When site looked at long term maintenance of the sand bank, they found that the original structure eroded more quickly as the stockpile was not big enough for the sand martin nest, as predicted 20/30 nests and it was more like 50+.

So as part of the long maintenance of the sand bank, they have decided to re-design the stock yard to accommodate a larger sand bank sited at the far end of the yard at end of the stock yard (next to existing bunding) next to the area close to our neighbours (housing) to make a larger sand bank which will be north facing (same as original bank). It will be structured to accommodate more sand martins and allow some nests on other faces (as started on east & south sides of the bank)

Tips - The sand bank was created when site saw birds trying to nest in existing stock piles, so created a bank without releasing how many sand martins would nest there. If we had to plan again, the site would have taken more time to assess the design of bank prior to creating to ensure it could remain long term.

What was your personal motivation for carrying out the enhancement?

To make enhance biodiversity on site and give sand martins a place to nest, whilst creating a positive atmosphere at work.



Team who were involved