

Tottenham Court Road Station Upgrade Oxford Street, London

Taylor Woodrow, BAM Nuttall – Joint Venture

BIG Challenge 2015 submission category: Temporary

Project overview

The Tottenham Court Road Station is being upgraded in a joint venture between Taylor Woodrow and BamNuttall. It is a complex £300 million project and it includes:

- A new, larger ticket hall, 6 times the size of the existing one.
- New entrances and a public plaza outside Centre Point.
- Installation of 8 new escalators.
- New access to the Northern and Central line platforms.

A combination of a roof top vegetable and wild flower garden and a day's volunteering on a London Wildlife Trust nature reserve have helped improve both actual biodiversity and appreciation of local ecology and natural systems by project staff.

The garden has been established from recycled materials and donations from staff and suppliers. The project contributed both staff time and unwanted materials to the nature reserve for access improvements and habitat management.



Photo: Roof top garden – first harvest

What were the biodiversity conditions on site, prior to the enhancement?

None. The site is all urban redevelopment. In 2014 we installed insect hotels and swift nest boxes on the office building. This was submitted for the 2014 BIG Challenge.

Were there any specific conditions that led to you carrying out this work?

None. This was purely done to contribute to local biodiversity and help encourage project staff to establish gardens of their own/engage in local biodiversity schemes.

What were the biodiversity measures taken?

A roof top vegetable and wild flower garden has been established on the project. With no space at ground level at the very confined Central London location, the garden has been installed on the roof of one of the new station buildings.

Wooden planters and a rain water harvesting system have been constructed from reused waste materials. A wide range of vegetables (French and runner beans, kale, potatoes, onions courgettes, chard and carrots) along with wildflowers are being tended by project volunteers

from both the contractor and the client. Donations of equipment and material have also been made by staff and suppliers making this a truly multiparty initiative.

The garden has proved very popular on site and generated a great deal of interest and pride. In addition to the vegetables, wild and cultivated flowers have been planted to provide attraction for wildlife.

From zero biodiversity on site there are now butterflies and other insects attracted to the garden for both a source of food and breeding habitat. The produce is being donated to St Patrick's Church next door, for their food for the homeless scheme.

The project will run for the remaining 18 months of the overall project and aim to grow winter vegetables and a further summer flower crop. At the end of project, the planters, watering system and tools will be offered to local schools.

In addition to the vegetable garden, to help celebrate World Environment Day 2015, staff from the TCRSU project took part in a volunteer day at London Wildlife Trust's Hutchinson's Bank Nature Reserve, South Croydon.

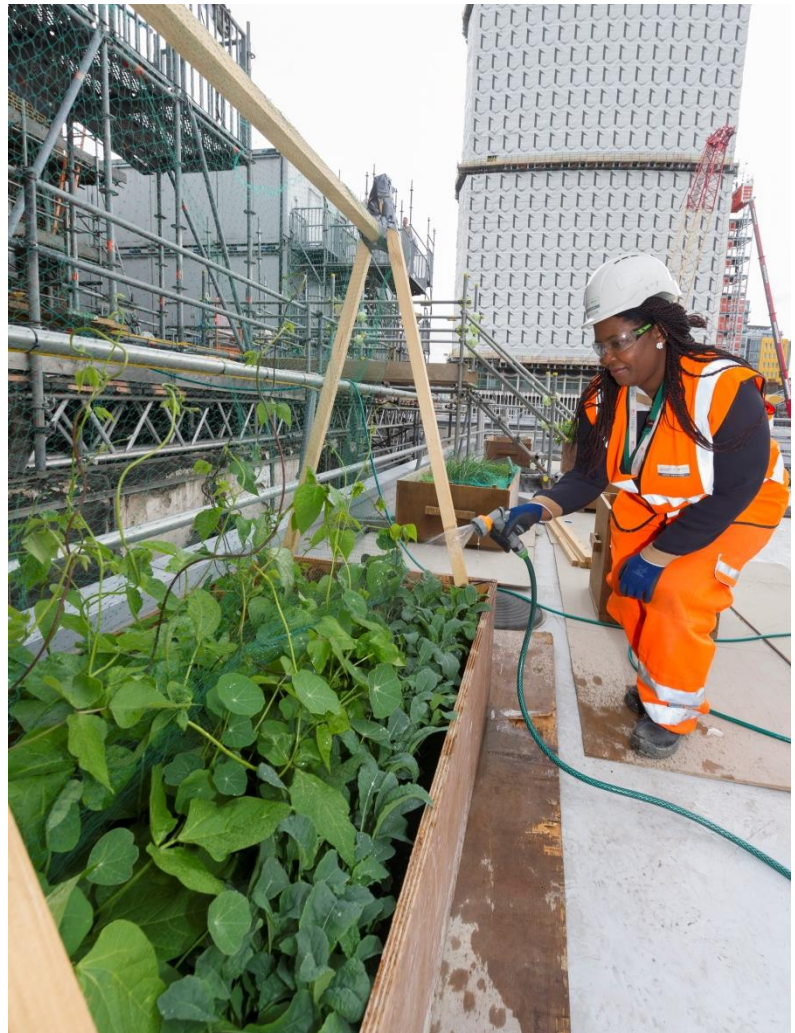


Photo: Roof top garden watering

The project donated some railway sleepers and wooden beams. Employees from Taylor Woodrow, BAM Nuttall and London Underground installed benches made from the sleepers, rebuilt steps, repaired gates and cleared vegetation.

How would you best describe the project?
An enhancement.

Further information

Scrap wood from site, along with old tool boxes and an empty plastic barrel were reused to construct the planters and rainwater harvesting system.

The water butt was ingeniously plumbed into the existing building drainage to allow it to fill, but the overflow to be diverted back to the drains. The initiative has met with great

interest from project personnel, some of whom have got involved with the project after seeing the first successes and are now growing their own choices and expanding the garden.

The following contract partners and suppliers generously donated the compost (peat free) for the garden; Speedy Hire, NG Bailey, DMC, Greenham, VJ Technologies, SAS, Supply UK, Kayleigh Plant and Rentavent.

What was your personal motivation for carrying out the enhancement?

The aim was to show others on the project how easy it is to increase biodiversity/grow vegetables.

I enjoy gardening and thought this was the only type of scheme our very restricted site could undertake.



Photo: Volunteering day – Hutchinson's bank nature reserve



Photo: Hutchinson's bank habitat management