

## RIVERWALK LONDON

Sir Robert McAlpine Ltd

**BIG Biodiversity Challenge Award category: Small Scale Permanent**

### Project overview

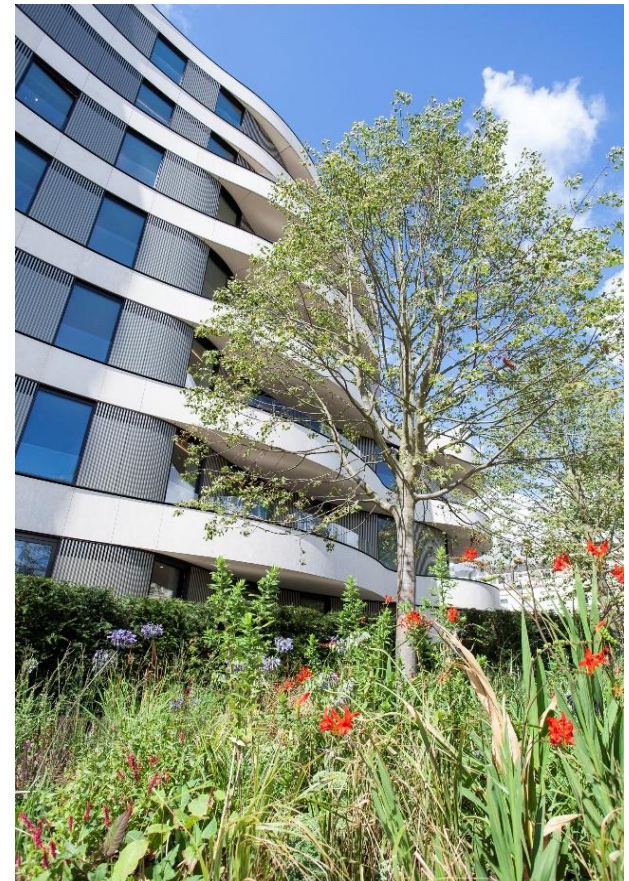
Riverwalk provides 116 luxury apartments and penthouses in a highly desirable location on the banks of the River Thames. The development comprises two buildings of 17 storeys and seven storeys respectively. The landscaping strategy included the installation of extensive green roofs, with sympathetic planting and landscape management of the areas surrounding the new buildings on site.

### What were the biodiversity conditions on site, prior to the enhancement?

Prior to the redevelopment of the site, there was a 1960s twelve storey office building with vegetation limited to narrow, raised beds planted with introduced shrub species and seven semi-mature London plane trees. Overall, the site was assessed to have low ecological value.

### Were there any specific reasons that led to this project?

There was a Code for Sustainable Homes requirement on the project and it was identified that there was a significant opportunity to increase the biodiversity on the project.



*Biodiverse planting accessible to the general public*

### What were the biodiversity measures taken?

The botanical diversity of the site was increased by planting over 200m<sup>2</sup> of species that provide a source of nectar and pollen for insects, and berries and seeds for birds. Ten semi-mature trees have also been added to the site.

This has optimised the foraging and nesting value of the habitat to birds and increased the ecological value of the site in the long term.

426m<sup>2</sup> of extensive green roofs have been installed across five different sections of roof to provide additional wildlife habitat. They comprise a sedum substrate with native wildflower seed mixes. Some of the areas are interspersed between photovoltaic arrays that provide electricity to the development.

Nesting sites for birds have been provided by installing appropriate bird boxes. The bird boxes are aimed for use by species known to occur in the locality, including for peregrine falcons. The boxes have been situated in optimum locations to encourage usage.

A specialist ecologist has been consulted throughout the project to ensure that the landscaping strategy was appropriate and completed to a high quality. Overall, the ecological value of the site has been increased from 0.01 to 4.45 species per m<sup>2</sup>.



*A close-up demonstrating the species variety*



*The semi-mature trees introduced to the site*

## How would you best describe the project?

Enhancement

## Further information

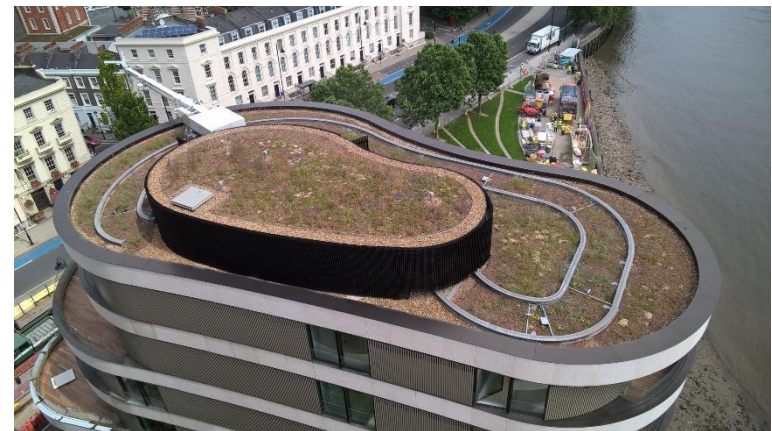
In revisiting the scheme after completion, the landscaping is attractive and has created welcoming spaces. The project has seen a notable increase in biodiversity, with an increase in the area of soft landscaping and the introduction of additional variety in the species on the site. Appropriate landscape management has been introduced to ensure the effective long term management of the landscaped areas.

## What was your personal motivation for carrying out the enhancement?

The motivation for carrying out the enhancement was to deliver attractive and biodiverse spaces in and around an urban setting, that people using the spaces will enjoy.



*Connecting people with biodiversity*



*One of the areas of extensive green roof*